

Installing Windows versions of Lertap 5

As of: 19 July 2019

There are two ways to install Lertap 5 on a computer using the Windows operating system.

One way, the traditional way, is to use an “installer program”. The program that does this has a name *similar* to “SetupLertap51092.exe”.

The other way is to download a zip file containing a suite of files with Lertap 5 Excel workbooks and related documentation.

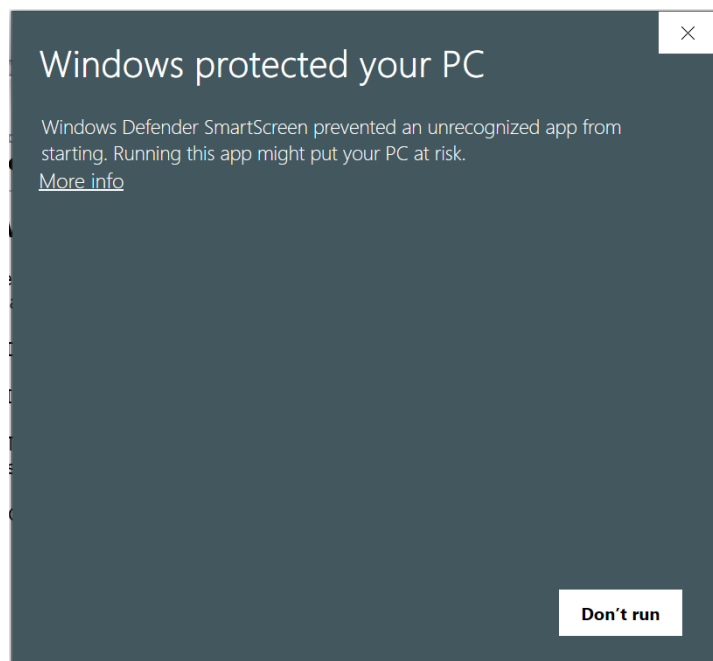
Refer to [this webpage](#) please – you’ll see these two options presented and get to choose the one you want.

*The steps below apply **only** when you’ve taken the option to use the installer program and have downloaded it to your computer.*

1) Run the Lertap 5 installer program and be prepared for **Windows’ warnings**.

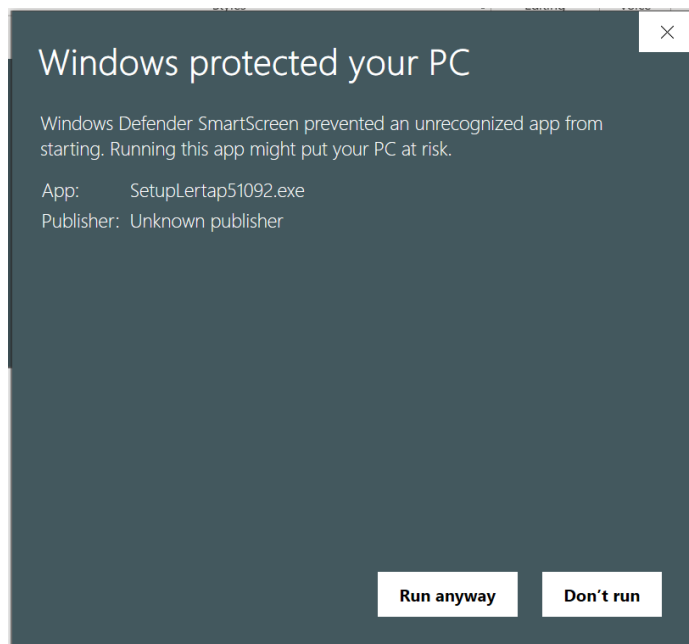
(The installer is an “exe” file with a name *similar* to **SetupLertap51092.exe**.)

You may see this screen:



If you do see this screen, click on “More info”.

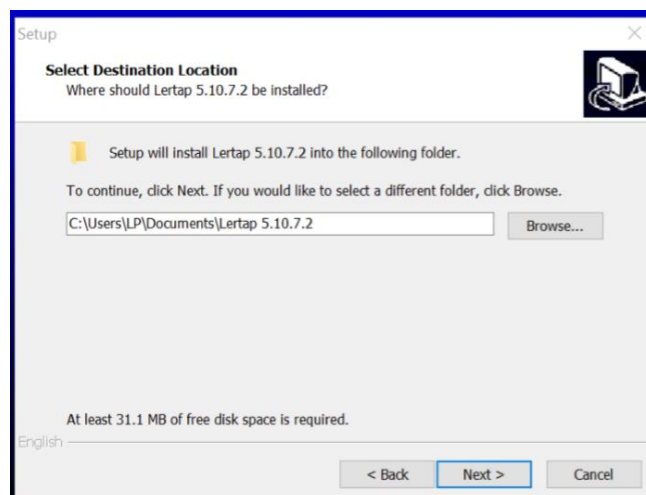
You might then see another screen, the one below:



Now click on “Run anyway” and the installer program should begin.

When the installer program runs, it can be expected to display as many as eight dialog “steps”, or screens. These will ask questions of you and, most importantly, give you the chance to indicate where you’d like Lertap 5 to be installed on your computer.

The screen snapshot below shows the usual initial dialog; in this case the user, “LP”, was installing version 5.10.7.2 into his Documents folder – this is the default installation destination.



If this step does not appear, the implication would be that Lertap 5 has already been installed on your computer. In this case you should cancel the installer and rush to read [this document](#).

Should problems persist, get help by sending an email message to support@lertap.com. Please mention which version of Windows your computer is running when you write; if you’re not sure which version you have, write anyway.

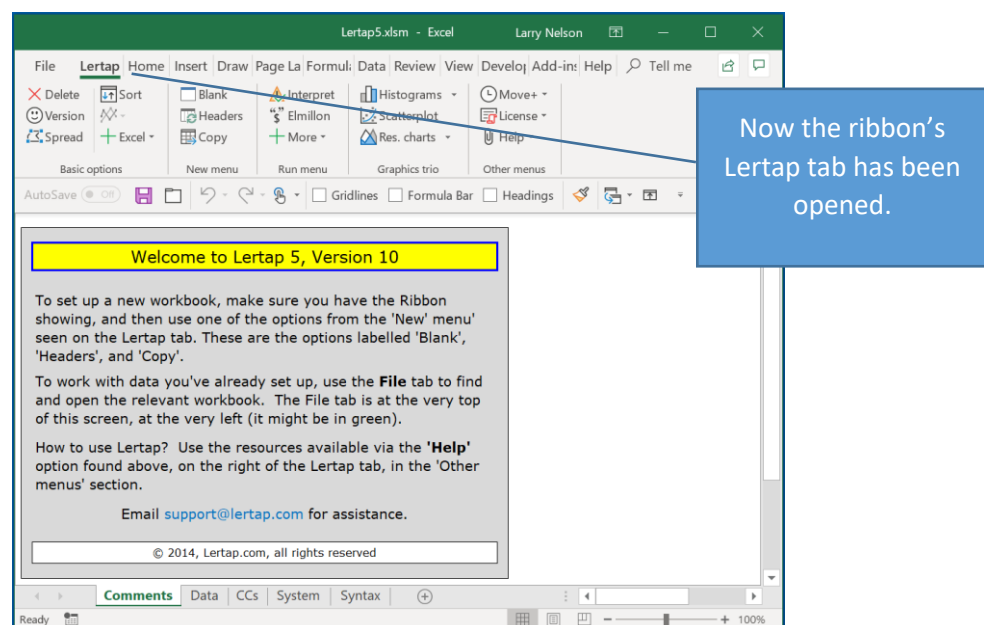
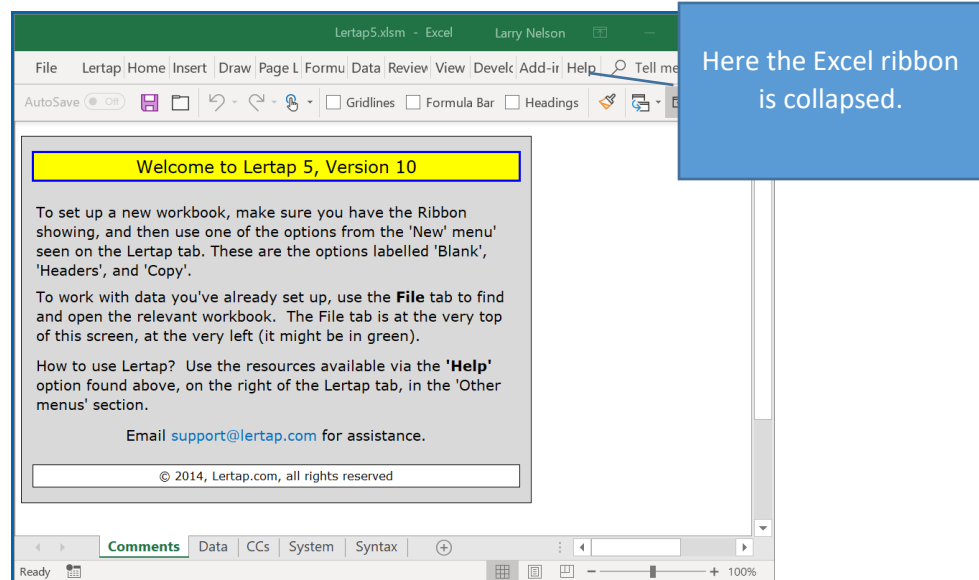
2) Check it out. Is it running okay?

Lertap 5 software consists of three Excel workbooks: Lertap5.xlsm, Lertap5MacroSetA.xlam, and LertapRibbon.xlam. All of these workbooks contain computer code modules referred to as “macros”.

The main workbook, the “boss”, is Lertap5.xlsm. When Excel opens this workbook, the other two workbooks are automatically opened.

To run Lertap 5 you need to open the Lertap5.xlsm workbook. This may be done by first opening Excel and then using its File menu to find and open Lertap5.xlsm; it can also be done by simply using the File Explorer to go to the installation folder and then double-clicking on the Lertap5.xlsm file, a process pictured in [this webpage](#). **NOTE:** if problems develop when trying to open the workbook, or if Excel says it’s busy and seems to do nothing: [read this!](#)

If the installation has gone as expected, one of the following two screens should display; in the first screen the Excel ribbon has been collapsed; in the second screen the ribbon has been displayed, and the Lertap ribbon tab has the “focus”.



Now, look at the two screens above again. The ribbon tabs are named at the top, ranging from “File” on the left, to “Tell me” on the right.

Next to the “File” tab you should see the “Lertap” tab if all has gone well.

If the Lertap tab is not seen it implies that Excel’s macro security system has blocked access to the macros in the Lertap5.xlsm workbook and, at this stage, you’ll then want to have a look at [this topic](#).

3) At this point Lertap 5 should be installed and good to go.

You will note that it will be running as the “**Mini**” version. This version is full featured – it’ll do all things Lertap, but it’s limited in that it will process just the first 100 records found in the [Data](#) worksheet (there is no limit on the number of items, just the number of data records). In order to process an unlimited number of records, a license is necessary. Refer to the following step to find out how to get one.

4) Purchasing a license

Please visit the [Lertap e-store](#) to read about how to purchase a license. Students may obtain a one-year license for free.

As of July 2019, the current Windows version of Lertap 5 was 5.10.9.2. [This page](#) describes some of this version’s distinguishing features. A more complete summary of updates may be found [in this document](#).

Special note: comments regarding an operational problem which may arise.

Some users may find that Lertap will be working okay, but then, out of the blue, announce that it’s reverting to the Mini version.

This problem is likely to arise if Lertap has been installed on a computer used by more than one person, and each person has an individual username and password. In this case, Lertap should have been installed to the Public Documents folder on the computer, but probably wasn’t. Uninstall Lertap and then re-install it, taking care to seat it under the Public Documents folder.

The problem may also occur when Lertap or Excel has found an error of some sort. Lertap has numerous user messages designed to “trap” common errors, but, nonetheless, there will be times when something special happens without a corresponding message to say what it was. In such events, Lertap or Excel may simply stop running. Or, Lertap will say, perhaps, that it’s going to revert to the Mini version. To fix this problem, close Lertap and then reopen it. If this does not solve the problem, close all workbooks, *close Excel itself*, and then reopen Lertap.
